

REINFORCEMENT OF PROCEDURES AT INTERNATIONAL ENTRY POINTS IN THE PVR INTERNATIONAL AIRPORT

Control and Prevention procedures at airports and seaports for the detection of suspicious cases.

The following actions will take place as part of the measures that must be established at entry points and abiding by international guidelines:

- Offer travelers arriving to and departing from our country information that encourages and facilitates access to healthcare in case the disease presents itself before, during or after international travel.
- Promote best practices among travelers (hand-washing hygiene, sneezing etiquette, and use of disposable surgical masks in the presence of symptoms of acute respiratory infection).
- Rapid evaluation to detect sick travelers.
- Reinforce methods for the prevention of and preparation for the detection of suspicious cases.
- Improve measures to provide travelers with information related to the disease by disseminating messages promoting health in high-visibility areas so travelers can view them.

DETECTION AT ENTRY AND EXIT POINTS

International health services at entry points will be improved so that, in addition to routine screenings, entry assessments can be applied to both national and international travelers with emphasis on those coming from high risk areas, according to the current operational definition. Temperature checks should always be accompanied by the dissemination of risk communication messages at the points of entry.

These evaluations will be via:

- Thermal checks: to identify possible suspects at the point of entry.
- Interviews of travelers who meet the operational definition of a suspicious case, with a special emphasis on respiratory symptoms and travel history.
- Cases that meet the definition will receive an epidemiological evaluation and a complete study.
- Epidemiology will be notified immediately.

INTERNATIONAL HEALTH ACTIVITIES

These actions are carried out 24 hours a day, 366 days a year and will be reinforced:

Identification of suspicious cases by international health authorities via the evaluation of travelers upon entry according to the current operational definition of a suspected case of COVID-19.

If a traveler onboard an aircraft/ship shows signs and symptoms indicative of acute respiratory infections, the declaration of maritime health model or the health segment of the general declaration of the aircraft shall be used to record the health information on board and send it to the

health authorities at the point of entry when required by the country. Cabin crew must follow the operational procedures as recommended by the International Air Transport Association (IATA) with respect to the management of suspected transmissible diseases aboard the aircraft.

Upon receipt of the notification of a traveler with fever and/or respiratory symptoms on board, the international health services at the point of entry:

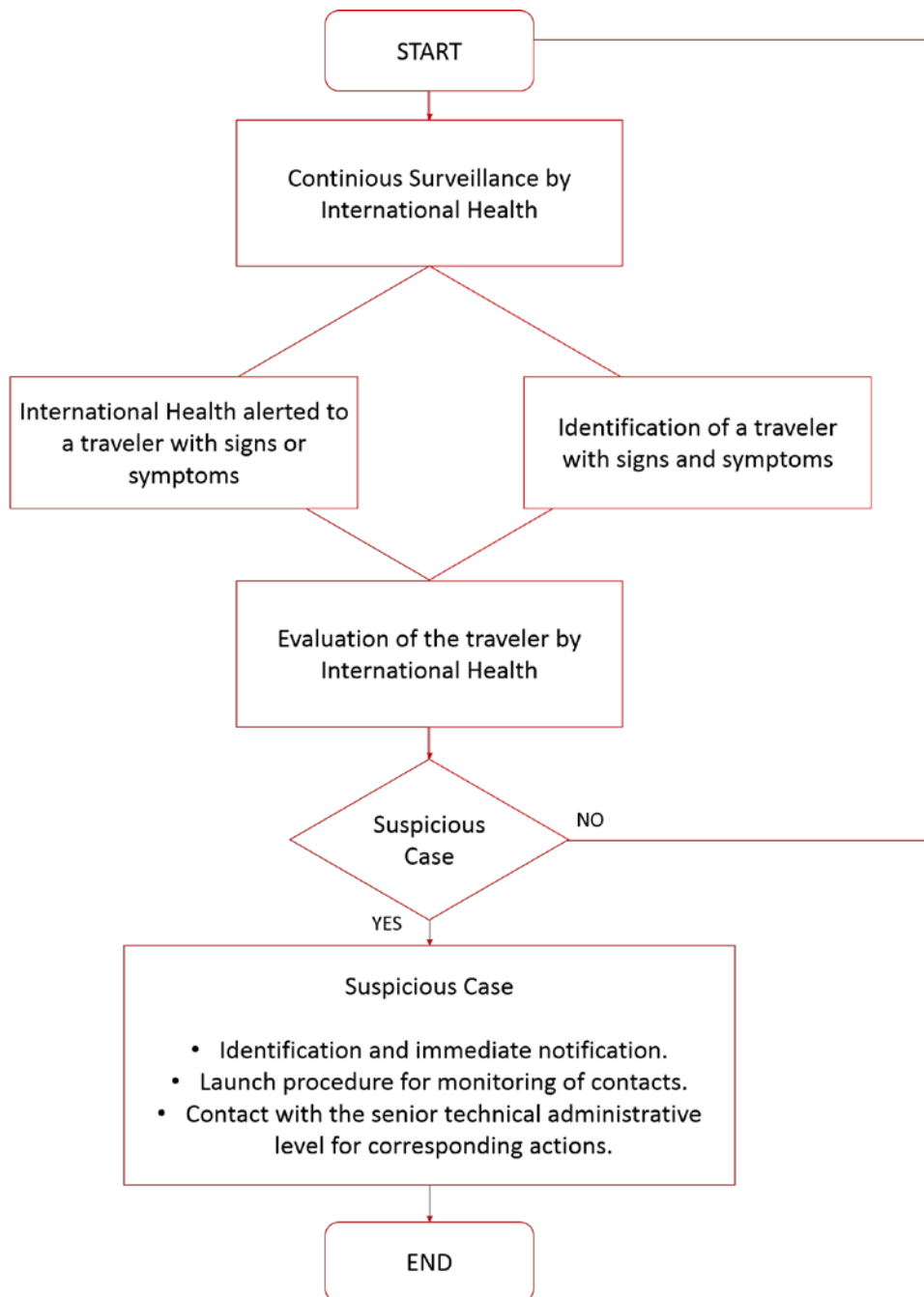
- Will instruct the crew to keep the traveler with a fever and/or respiratory symptoms in a space where they have the least possible contact with the crew or the passengers.
- It is recommended from that moment on that any person who has contact with the traveler with fever and/or respiratory symptoms use appropriate personal protective equipment.
- If disposable surgical masks are available on board the aircraft of vessel, they will be provided to the patient to use. If a passenger with symptoms is identified on a ship, it is recommended they maintain a distance of at least one meter from the patient.
- International Health personnel will conduct the case assessment to verify that it meets the operational definition of a suspected COVID-19 case. This assessment should question the semiology of the signs or symptoms presented by the patient as completely as possible, as well as their travel history and possible exposure to other sick people.
- A disposable surgical mask should be provided to the patient as soon as possible.
- The personnel who carry out the evaluation must assess whether the evaluation should be carried out at the place where the patient is or transferred to an area with less risk of transmission based on the characteristics of the point of entry and the possibility of exposure of more people to the patient. Likewise, international health personnel must use the required personal protective equipment at all times.
- Immediately report the suspected case to the senior technical administrative level.
- Identify contacts during the trip for evaluation and follow-up actions.
- When transferring a suspected case of COVID-19 to a different area than where it is located, it is advisable to do so in areas of low traffic and the patient should wear a disposable surgical mask.

Actions in response to a suspected case of COVID-19

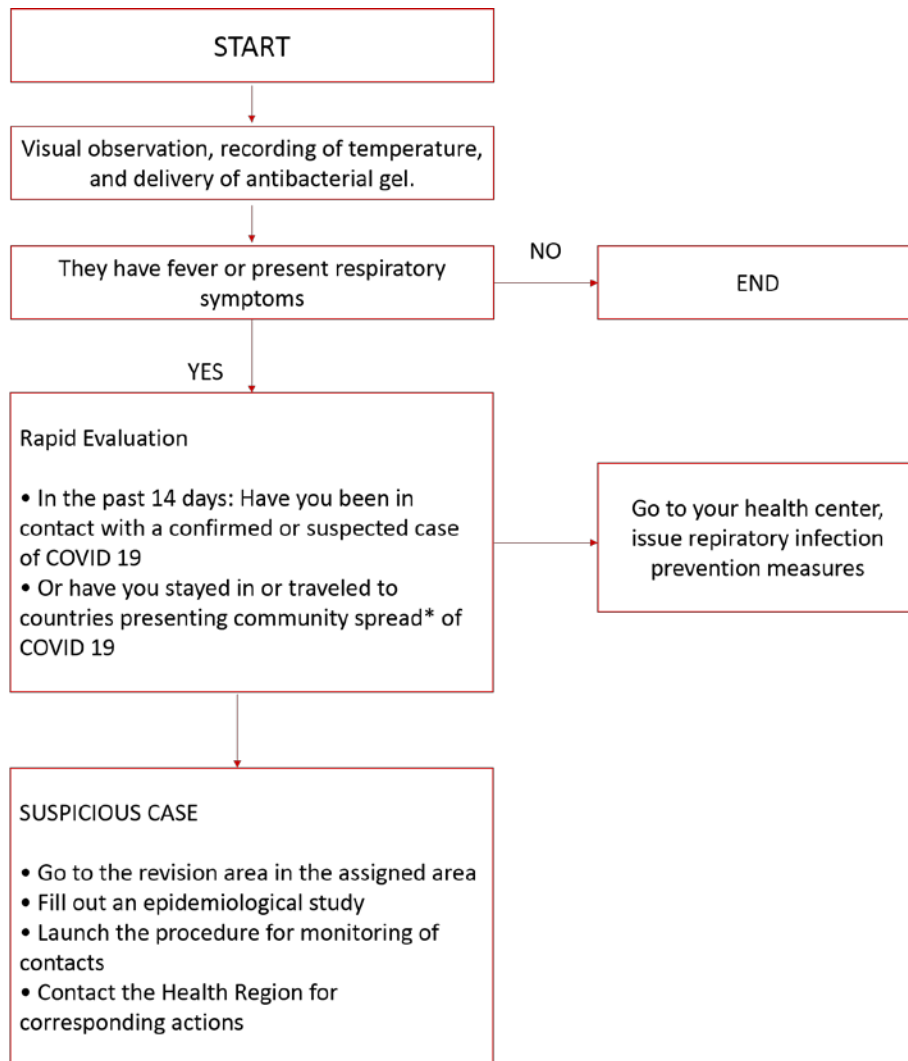
- Immediate notification of the suspected case to the senior technical administrative level within 24 hours.
- Carry out an epidemiological study of the suspected case of COVID-19.
- Begin with the established procedure to study contacts.
- If it is necessary to transfer the suspected case of COVID-19 to an area other than the point of entry, it is advisable to do so through areas of low traffic and the patient should wear a disposable surgical mask and take the corresponding actions in coordination with the senior technical administrative level.

Procedure for the Initial Care of Suspicious Cases at Ports, Airports, and Other Public Establishments

Procedure for the Initial Care of Suspicious Cases in Ports, Airports, and other Public Establishments



Procedure for Attention to National Travelers in the PVR International Airport.



*The operational definitions are subject to change and will be updated solely by the National Committee for Epidemiological Surveillance (CONAVE) according to the availability of additional information.

Requirements sheet is attached to needs table

Detection Points:

Puerto Vallarta International Airport

1-Immigration room, outside the International Health Office

2-South wing of the Immigration Room.

3- Domestic Arrivals.

4- National and International Departures.

5-Aerotron and Civil Aviation (mobile).